

ZONTES

ZONTES Intelligence
users' manual

1.APP Download



<http://8.209.68.78/tayouupdate/update/MSBox.apk>

Scan the above QR code or enter the URL to download the APP.

App Store Preview

This app is available only on the App Store for iPhone.



Zontes Intelligence ⓘ

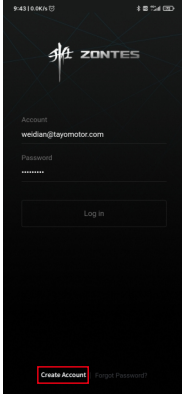
ZONTES, Intelligence.msbox
广东大冶摩托车技术有限公司

#136 in Navigation

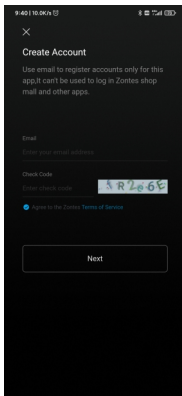
Free

IOS mobile phone, search for "ZONTES intelligence" in "APP store" to download and install.

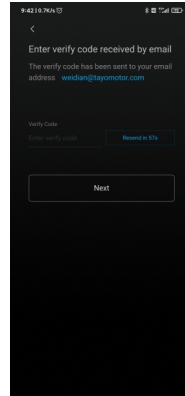
2. Account registration



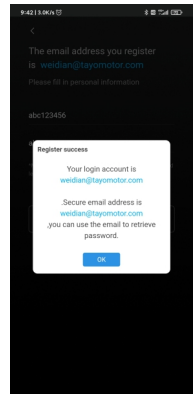
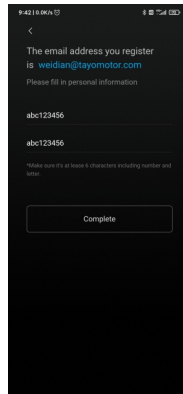
1. After opening the app, click "Create Account" at the bottom left.



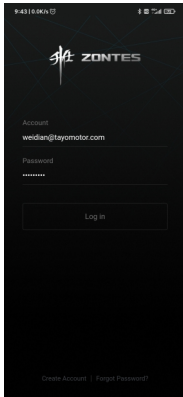
2. Enter a valid email address and a verification code and click "Next"



3. Open the email address you just entered, check the verification code you received and enter it, and click "Next" after confirming that it is correct.

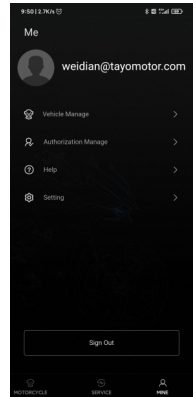
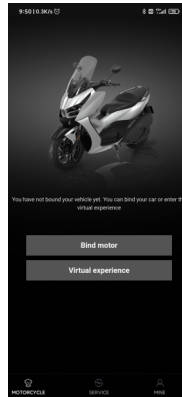


4. Then enter the login password, and again Click "Complete" to complete the registration, If you forget your password, you can change your password again through this email address.

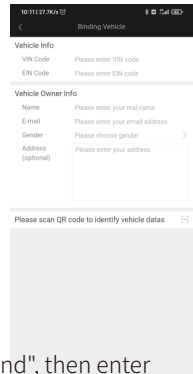
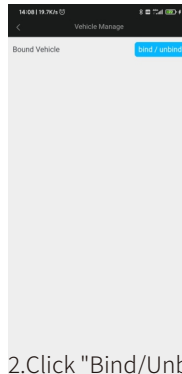


5.If you return to the login page, you can log in with the email address and password you just registered

3.Bind the vehicle



1.After opening the app, click "ME" at the bottom, and then click "Vehicle Management"



2.Click "Bind/Unbind", then enter the frame code and engine code of the corresponding vehicle, then enter personal information, and finally scan the QR code on the "Fault Information" page on the table, and then click "Submit" to bind the vehicle after successful scanning.

4. Introduction

1. Vehicle interface

(1) Vehicle level interface (4G control interface).

Compatible

motorcycle models

The amount of
oil remaining

Unlock

Vehicle
interface



Informal Notices

Bluetooth control

Cruising range

Corresponding vehicle
pictures

Find a motorcycle

Shut off and lock

4G keys to control the
vehicle

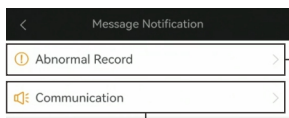
Refresh the vehicle
information

Vehicle Level 1 page
(Swipe right to enter the
secondary menu)

Personal information and

Settings interface

(2) Message Notification Interface (Click the Message Notification icon "🔔" to enter)



Vehicle Alarm Notification

(4G controller is required) Official notice

Official notice

ZONTES Smart tutorial on how to use the foreign version of the APP

(3) Blue tooth control interface (tap the information notification icon " ⓘ "to enter)

Blue tooth connection status

Shut off and lock

Open the fuel tank lock

Ambient lighting control (Except for 125 E only.) E Series Models)

Vehicle management (Select the corresponding vehicle for Bluetooth control, and note that when you change the vehicle selection in this setting, the vehicle selection in the vehicle management settings will be changed synchronously)

4 G keys to control the vehicle

Unlock at boot

Open the saddle lock

Precautions for Bluetooth control vehicles

(4) The secondary interface of the vehicle (vehicle information interface) needs to be swiped right to enter.

Maintain your remaining mileage

The time when the vehicle information was updated

Battery voltage

Front tire pressure

Standard tire pressure on the front wheels

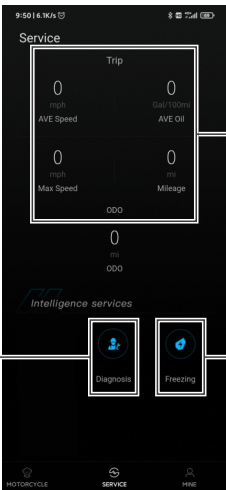
The amount of oil remaining

Rear tire pressure

Standard tire pressure on the rear wheels

ZONTES Smart tutorial on how to use the foreign version of the APP

Service interface (all interfaces need to be equipped with a 4G controller to use)



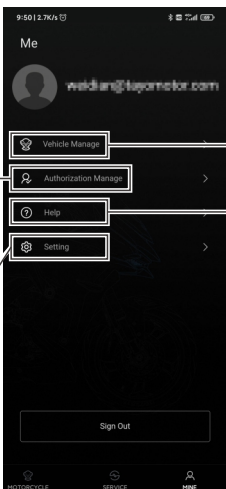
The screenshot shows the 'Service' interface of the ZONTES app. At the top, there is a 'Trip' section with four gauges: 'AVE Speed' (0 mph), 'AVE Oil' (0 Gal/100mi), 'Max Speed' (0 mph), and 'Mileage' (0 mi). Below this is an 'ODD' (Oil Due Date) gauge showing 0 mi. Underneath is the 'Intelligence services' section with two buttons: 'Diagnosis' and 'Freezing'. The bottom navigation bar has three icons: 'MOTORCYCLE', 'SERVICE', and 'ME'.

Vehicle-related information

Vehicle diagnostics (Need to turn on the power on and turn on the power off switch before use)

The vehicle freezes (Vehicle anti-theft function, the vehicle lock cannot be used after clicking)

(4) Personal information and settings interface.



The screenshot shows the 'Me' interface of the ZONTES app. At the top, there is a profile section with a circular icon and the email address 'weidian@tajomotor.com'. Below this are four menu items: 'Vehicle Manage', 'Authorization Manage', 'Help', and 'Setting'. At the bottom, there is a 'Sign Out' button. The bottom navigation bar has three icons: 'MOTORCYCLE', 'SERVICE', and 'ME'.

Vehicle management (Select the corresponding vehicleAccount information)

Account information

Help Center (Explanation of doubts for use)

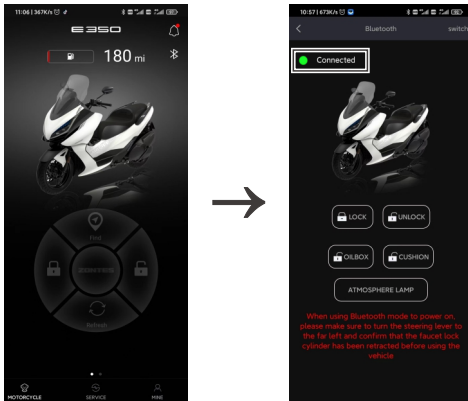
Set up the center

5. Use of the App

When the vehicle is not connected to the 4G controller, you can use the Bluetooth function of the APP to control the vehicle and upgrade the vehicle firmware within the Bluetooth communication range, but the vehicle information cannot be read

(1) Vehicle control

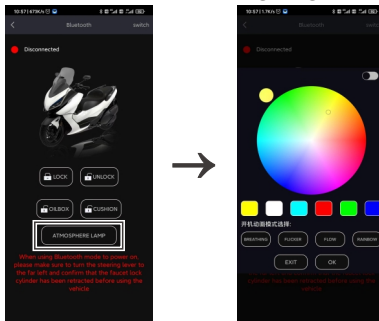
Click the "🔗" icon on the vehicle interface to enter the Bluetooth control interface. Wait for "● Disconnected" to change to "● Connected", which means that the "● Connected" Bluetooth connection is successful, and then you can control the vehicle.




(2) Ambient light control: Ambient light control needs to purchase atmosphere lamp modifications for installation before it can be used, and the ambient light control must wait for "● Disconnected" to become "● Connected", which means Bluetooth connection

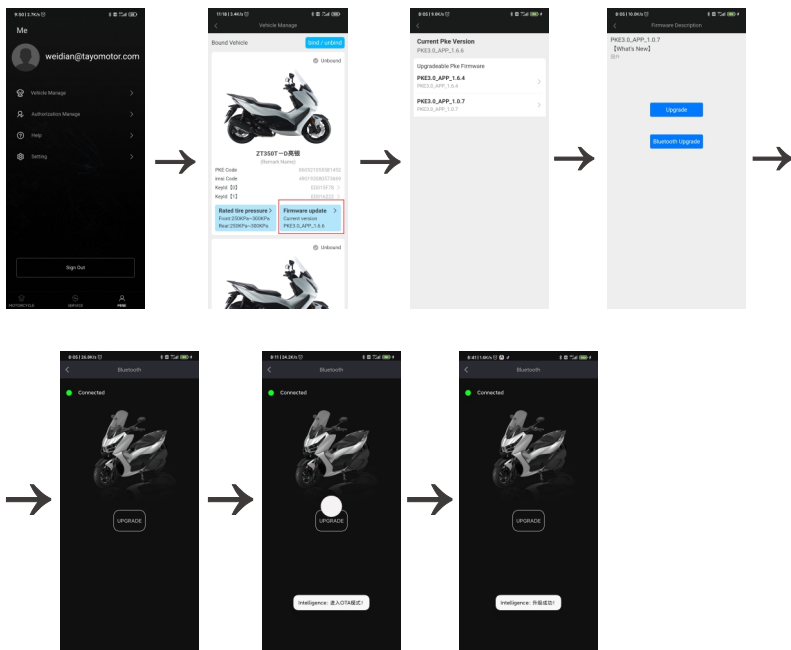
After success, then click the **ATMOSPHERE LAMP** icon to enter the atmosphere light control interface.

The upper left button controls the ambient lighting on and off .



ZONTES Smart tutorial on how to use the foreign version of the APP

(3) When upgrading the vehicle firmware, you must wait for " ● Disconnected" to become " ● Connected", which means that the Bluetooth connection is successful before upgrading. During the upgrade process, the circle "  " in the middle will display the current upgrade progress, note that the page in person should be maintained during the upgrade process, and the APP cannot be exited or the phone screen enters the sleep state; Do not disconnect the power supply during the upgrade process, the upgrade time will be greater than 5 minutes, and a prompt will pop up when the upgrade is successful, and you can exit the current page after completion.

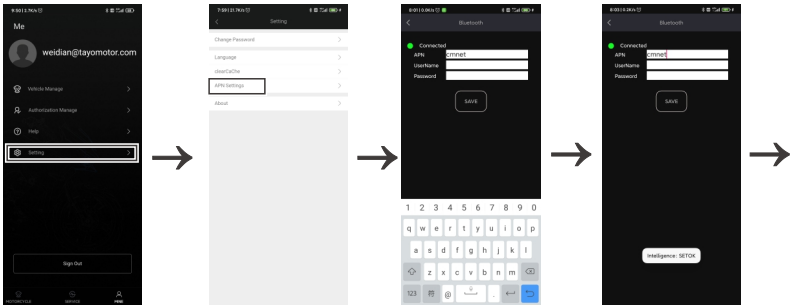


ZONTES Smart tutorial on how to use the foreign version of the APP

When the vehicle is connected to the 4G controller, it can remotely control the vehicle, read the vehicle information and upgrade the vehicle firmware through the 4G function of the APP.

(1) Modify the APN

After the customer has installed the 4G controller, please modify it to the corresponding APN according to the network of the SIM motorcycle d used by the 4G controller, so that the device can be connected to the correct network. When setting, you need to press the red Start button next to the vehicle to keep the vehicle in the power on state, and only after "● Disconnected" becomes "● Connected" means that the Bluetooth connection is successful. When setting up an APN, leave it blank if there is no UserName and Password.



PS: After filling in the APN, click SAVE, if it prompts "SETFAIL", it means that the setting fails, and "SETOK" indicates that the setting is successful, you need to manually click it multiple times to set it successfully, and you can exit the current page after the setting is successful.

(2) Control the vehicle and view the vehicle information

After the vehicle is bound and the APN is set, the vehicle can be controlled and the vehicle information can be viewed normally. Please note that some of the features of the foreign version are still under development and cannot be used temporarily.

ZONTES Smart tutorial on how to use the foreign version of the APP



(3) Upgrade the vehicle firmware via 4G

- When upgrading the vehicle firmware through 4G, the vehicle must be connected to the server normally, that is, it can be passed. 4 G to control the vehicle.

- When upgrading the vehicle firmware through 4G, the vehicle must be in a shutdown state, and the power supply must not be disconnected during the upgrade.

- During the upgrade process, the circle " " in the middle will display the current upgrade progress, and the upgrade will be prompted to complete after the upgrade is completed.

